

Downeast Thunder Creations 5 Panel Bench

Designed by Paul J. Bennett, Copyright 2018, all rights reserved.

The DTC 5 Panel Bench was specifically designed to fit in my Inventables X-Carve, CNC router. It was also designed within the Easel software that drives the CNC machine.

The design was **THEN** drawn in my CAD program in order to reproduce the drawings for anyone wishing to build his bench. As such, the Imperial dimensions are all decimal rather than in fractions of an inch, and the metric dimensions are in rounded millimeter dimensions.

If you are building this bench in either measurement systems, simply round off the numbers given in the dimensions in order to make it easier for you to build the bench. None of these dimensions are really crucial, and in fact, feel free to lengthen the bench, make it taller or shorter, wider or narrower, etc.

The measurements given in the drawings can be regarded as general guidelines.

I built the bench using Kreg brand, pocket hole fasteners (Kreg 1-1/4" course, pocket hole screws). I didn't use any glue.

You don't have to use pocket hole screws. You can easily use standard wood screws with or without glue and use wood plugs to hide the screws.

You don't have to have an X-Carve CNC machine. You can cut out the parts with a band saw, jig saw, or hand saws. Your choice.

I rounded all the exposed edges on both sides of the plywood with a 3/8" radius round over bit. The metric equivalent would be something close to 9mm radius for 18mm plywood.

The entire bench is made from either 3/4" or 18mm cabinet grade plywood.

You may have to fill in any voids in the plywood with wood putty before sanding and finishing.

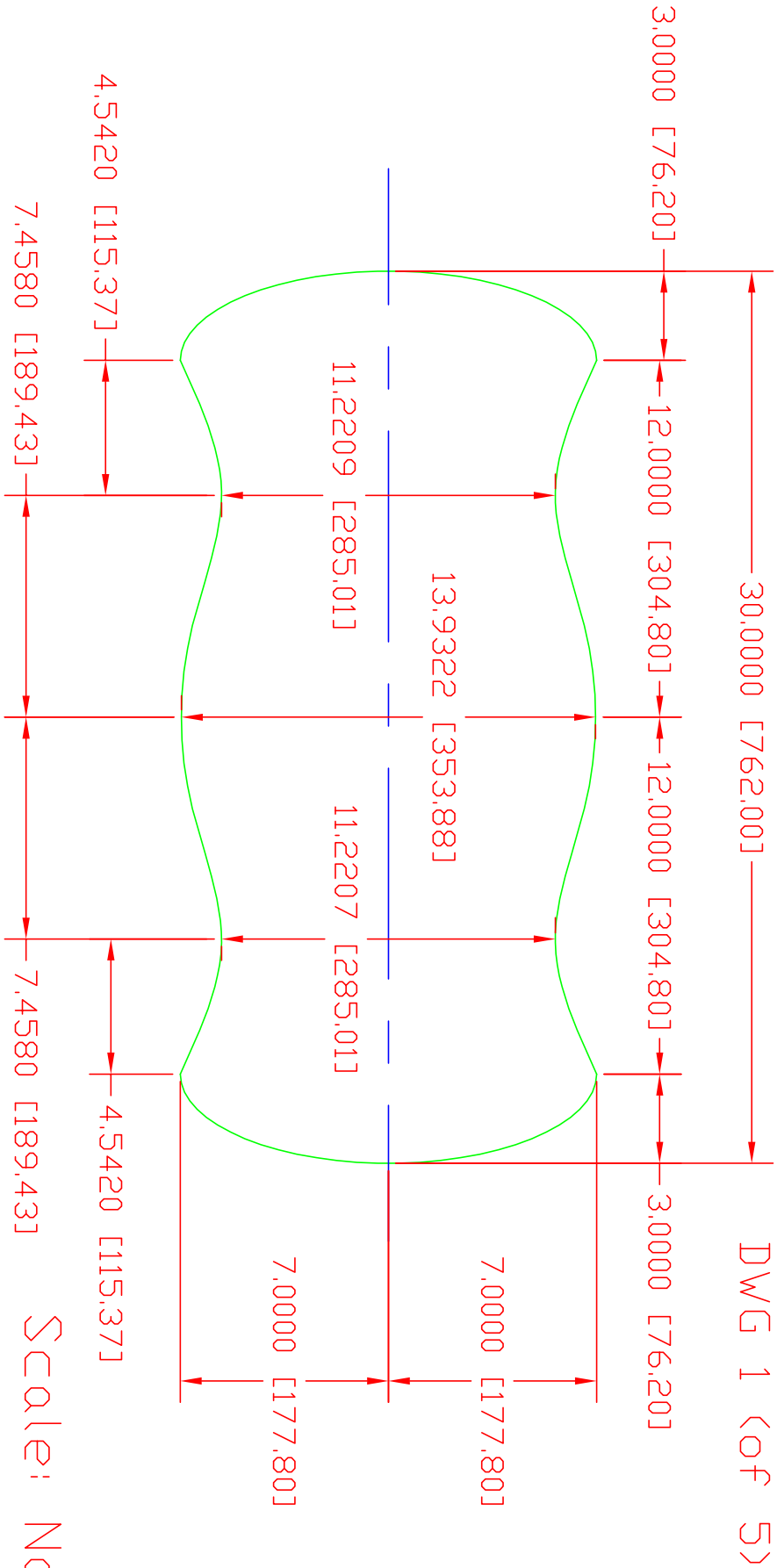
This is a fast & easy project that is economical to build. Makes great gifts!

Thanks for watching my video. Please subscribe, like and share!

- Paul J.Bennett

Downeast Thunder Creations 5 Panel Bench
Designed by: Paul J. Bennett
Copyright 2018, all rights reserved.

Bench Top



Scale: None

Downeast Thunder Creations 5 Panel Bench

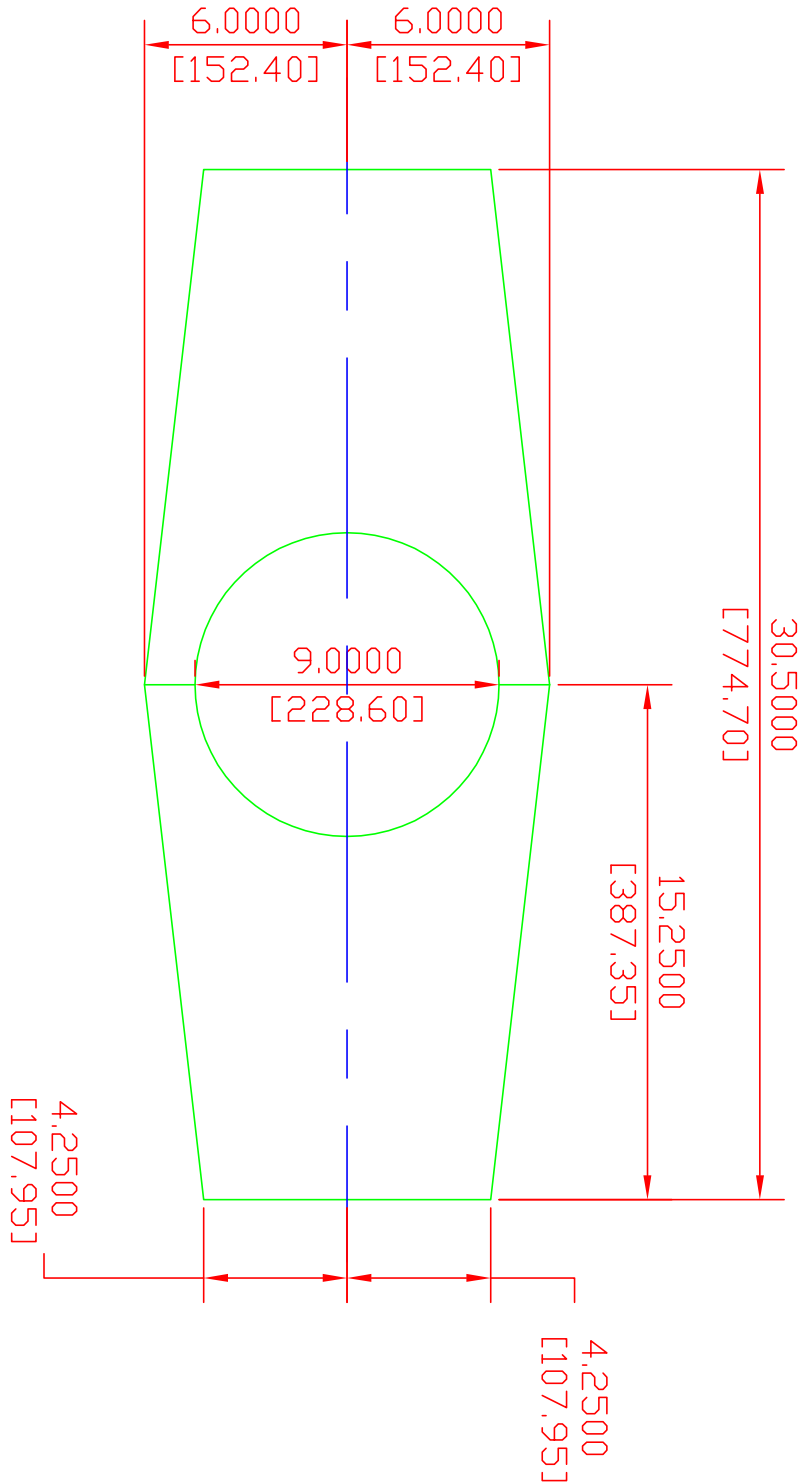
Bench Legs

DWG. 2 (of 5)

Designed by Paul J. Bennett

Copyright 2018 - All Rights Reserved

Scale: None

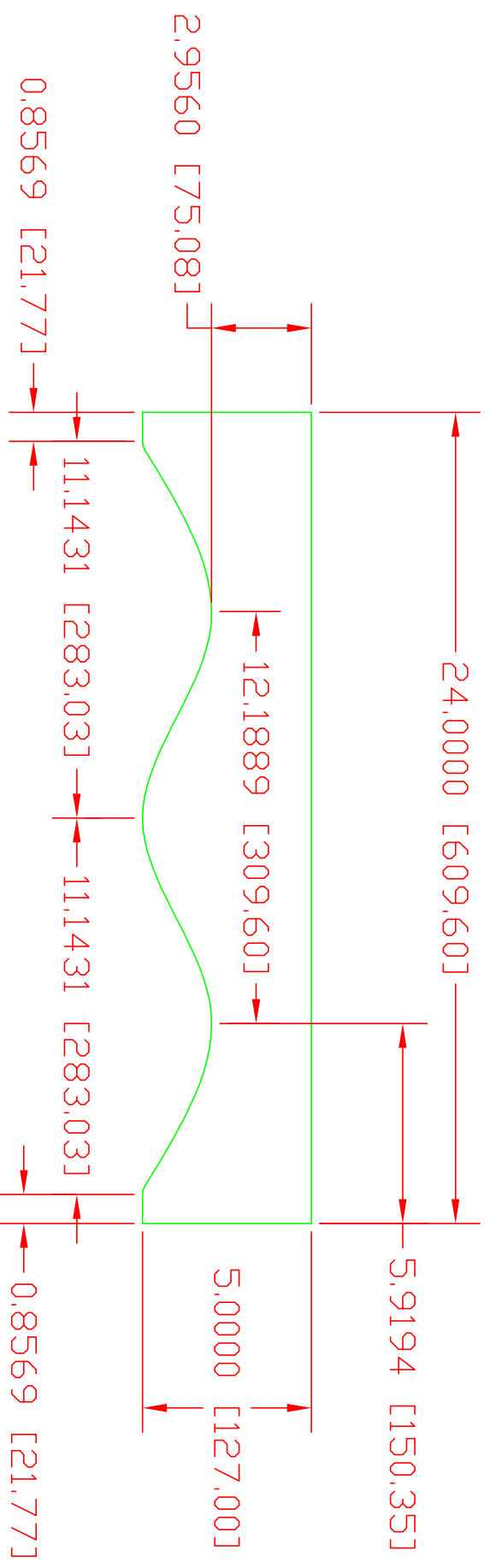


Downeast Thunder Creations 5 Panel Bench
Designed by: Paul J. Bennett
Copyright 2018, all rights reserved.

DWG 3 (of 5)

Stretcher (2 Req.)

Scale: None



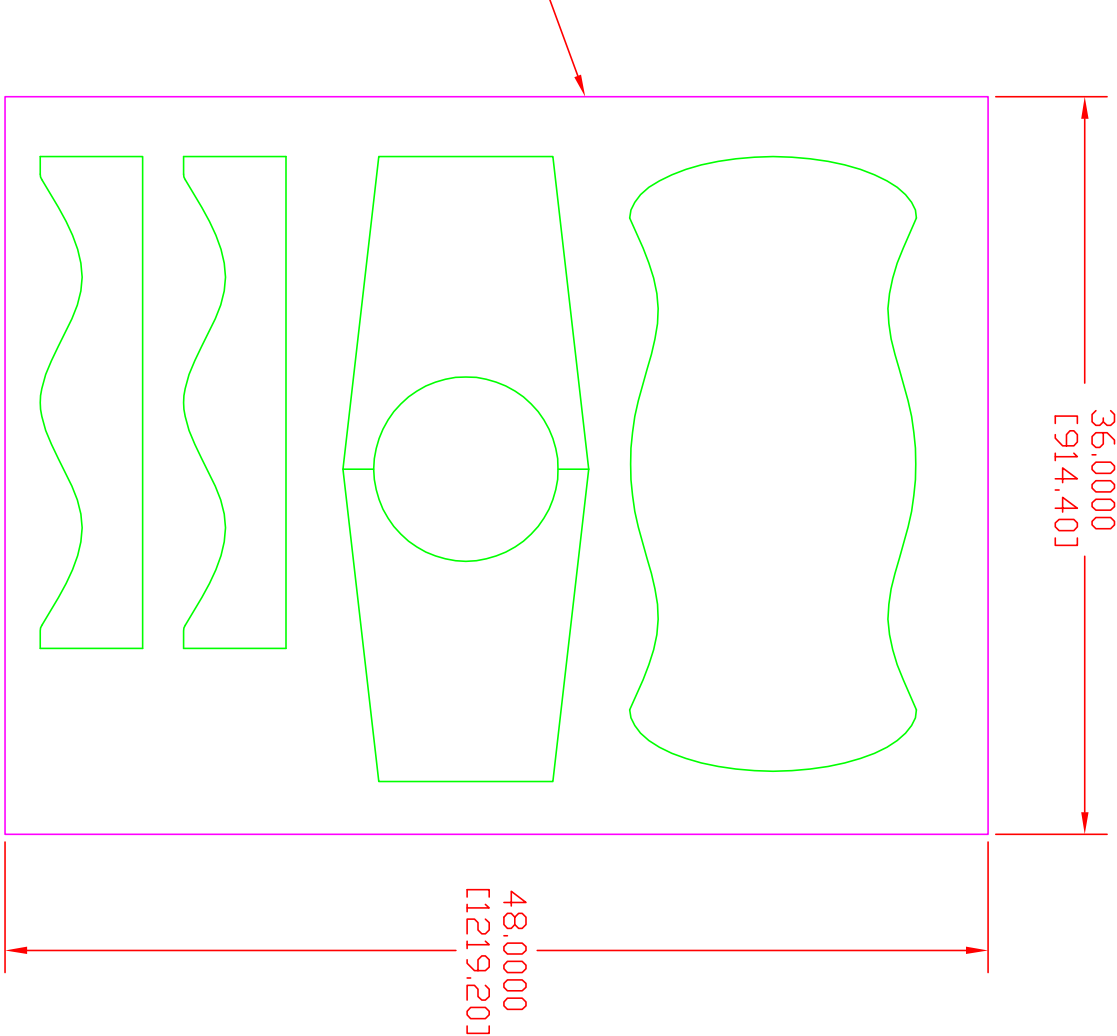
Downeast Thunder Creations 5 Panel Bench

Designed by: Paul J. Bennett
Copyright 2018, all rights reserved.

Plywood Layout

DWG 4 (of 5)

3/4" or 18mm
Plywood

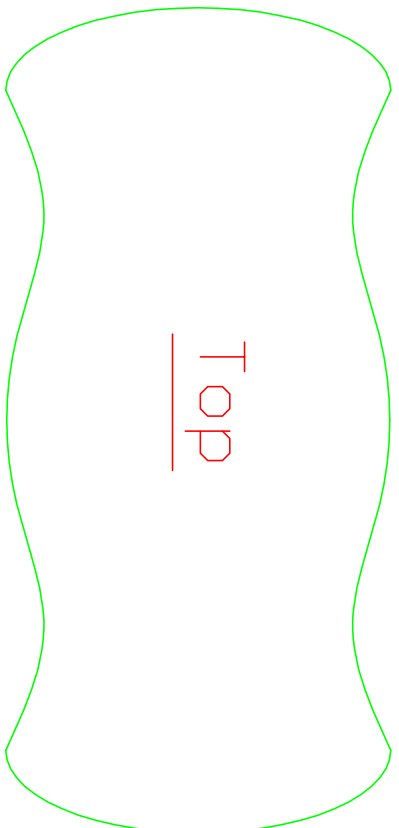


Scale: None

Downeast Thunder Creations 5 Panel Bench
Designed by: Paul J. Bennett
Copyright 2018, all rights reserved.

DWG 5 (of 5)

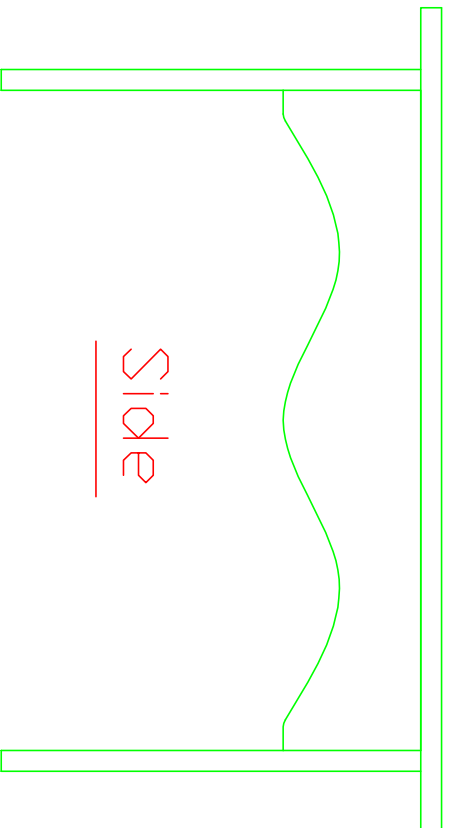
Assembly



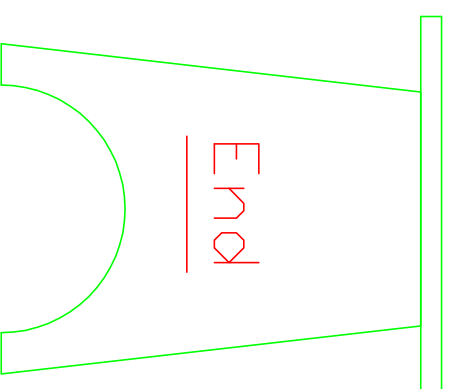
Top

Scale: None

Note: All components are 3/4" or 18mm plywood.



Side



End